

Multi-Fix[®] Cannulated Screw System (CCS)



Multi-Fix[®] System
Development
Cooperation
Technology

INDICATIONS

- Cannulated Screw System

Indications

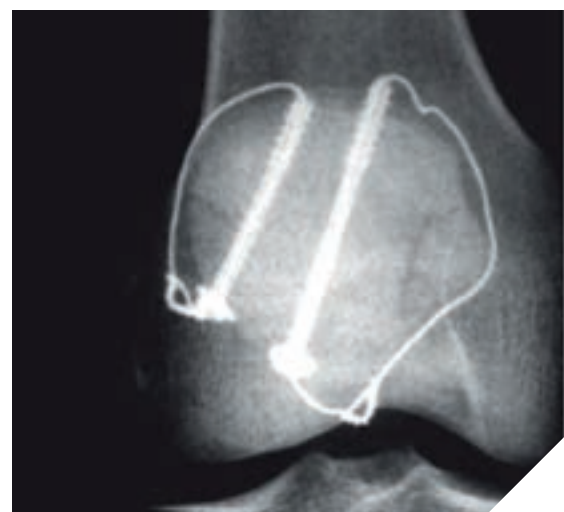
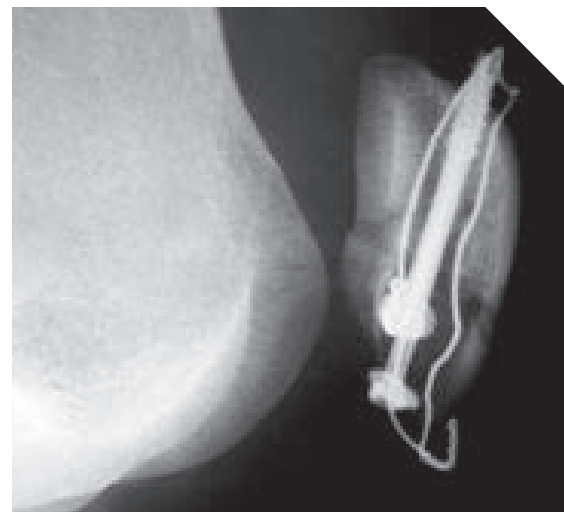
- 4.0/5.0/6.5 Cannulated Screw (CCS)

Fixation of fractures with medium fragments, e.g.:

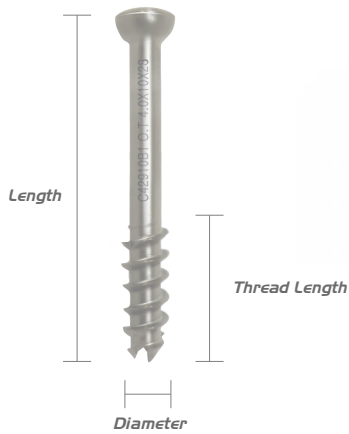
- Metatarsal fractures (Foot)
- Patella fracture (Knee)
- Pelvic fracture
- Femur fracture



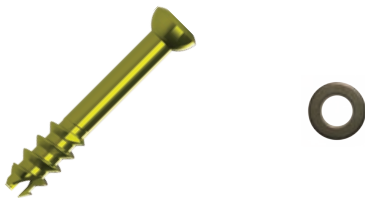
Multi-Fix Cannulated Screw System X-ray View



Multi-Fix Cannulated Screw System (CCS)



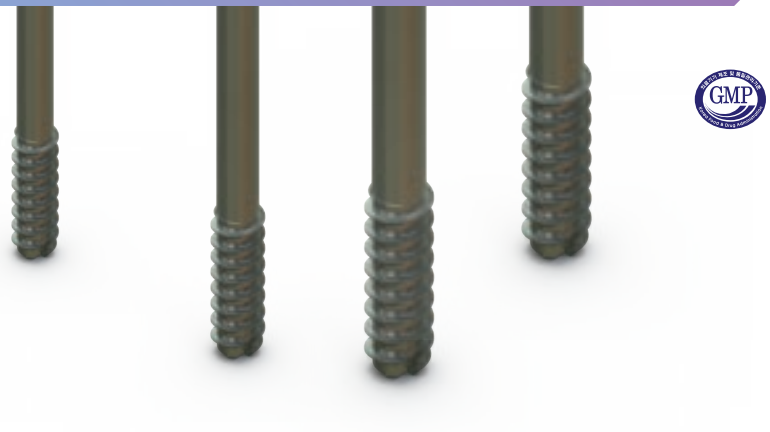
Ø 4.0 mm Cannulated Screw System



Ø 5.0 mm Cannulated Screw System



Ø 6.5 mm Cannulated Screw System



Ø 4.0 Cannulated Screw List

SU40012	Can. Screw 4.0 x 5 x 12mm
SU40014	Can. Screw 4.0 x 5 x 14mm
SU40016	Can. Screw 4.0 x 5 x 16mm
SU40018	Can. Screw 4.0 x 6 x 18mm
SU40020	Can. Screw 4.0 x 6 x 20mm
SU40022	Can. Screw 4.0 x 8 x 22mm
SU40024	Can. Screw 4.0 x 8 x 24mm
SU40026	Can. Screw 4.0 x 10 x 26mm
SU40028	Can. Screw 4.0 x 10 x 28mm
SU40030	Can. Screw 4.0 x 12 x 30mm
SU40035	Can. Screw 4.0 x 12 x 35mm
SU40040	Can. Screw 4.0 x 14 x 40mm
SU40045	Can. Screw 4.0 x 14 x 45mm
SU40050	Can. Screw 4.0 x 16 x 50mm
SU40055	Can. Screw 4.0 x 16 x 55mm
SU40060	Can. Screw 4.0 x 16 x 60mm
SU40065	Can. Screw 4.0 x 16 x 65mm
SU40070	Can. Screw 4.0 x 16 x 70mm
SU40D	Can. Screw 4.0 Washer

Ø 5.0 Cannulated Screw List

SU50024	Can. Screw 5.0 x 12 x 24mm
SU50026	Can. Screw 5.0 x 12 x 26mm
SU50028	Can. Screw 5.0 x 14 x 28mm
SU50030	Can. Screw 5.0 x 14 x 30mm
SU50034	Can. Screw 5.0 x 16 x 34mm
SU50038	Can. Screw 5.0 x 16 x 38mm
SU50042	Can. Screw 5.0 x 20 x 42mm
SU50046	Can. Screw 5.0 x 20 x 46mm
SU50050	Can. Screw 5.0 x 20 x 50mm
SU50055	Can. Screw 5.0 x 20 x 55mm
SU50060	Can. Screw 5.0 x 20 x 60mm
SU50065	Can. Screw 5.0 x 20 x 65mm
SU50070	Can. Screw 5.0 x 20 x 70mm
SU50D	Can. Screw 5.0 Washer

Ø 6.5 Cannulated Screw List

SU65035	Can. Screw 6.5 x 16 x 35mm
SU65040	Can. Screw 6.5 x 20 x 40mm
SU65045	Can. Screw 6.5 x 20 x 45mm
SU65050	Can. Screw 6.5 x 20 x 50mm
SU65055	Can. Screw 6.5 x 20 x 55mm
SU65060	Can. Screw 6.5 x 20 x 60mm
SU65065	Can. Screw 6.5 x 20 x 65mm
SU65070	Can. Screw 6.5 x 20 x 70mm
SU65075	Can. Screw 6.5 x 20 x 75mm
SU65080	Can. Screw 6.5 x 20 x 80mm
SU65085	Can. Screw 6.5 x 20 x 85mm
SU65090	Can. Screw 6.5 x 20 x 90mm
SU65095	Can. Screw 6.5 x 20 x 95mm
SU65100	Can. Screw 6.5 x 20 x 100mm
SU65105	Can. Screw 6.5 x 20 x 105mm
SU65110	Can. Screw 6.5 x 20 x 110mm
SU65D	Can. Screw 6.5 Washer

Ø 4.0 Cannulated Screw - Instrument

IS14-01	4.0 Cannulated Screw Case
IS14-02	4.0 Cannulated Driver
IS14-03	4.0 Cannulated Power Driver
IS14-04	4.0 Cannulated Reamer
IS14-05	4.0 Locking Driver
IS14-06	4.0 Guide
IS14-07	4.0 Guide Pin
IS14-08	4.0 Depth Gauge

Ø 5.0 Cannulated Screw - Instrument

IS15-01	5.0 Cannulated Screw Case
IS15-02	5.0 Cannulated Driver
IS15-03	5.0 Cannulated Power Driver
IS15-04	5.0 Cannulated Reamer
IS15-05	5.0 Locking Driver
IS15-06	5.0 Guide
IS15-07	5.0 Guide Pin
IS15-08	5.0 Depth Gauge

Ø 6.5 Cannulated Screw - Instrument

IS16-01	6.5 Cannulated Screw Case
IS16-02	6.5 Cannulated Driver
IS16-03	6.5 Cannulated Power Driver
IS16-04	6.5 Cannulated Reamer
IS16-05	6.5 Locking Driver
IS16-06	6.5 Guide
IS16-07	6.5 Guide Pin
IS16-08	6.5 Depth Gauge

Multi-Fix Cannulated Screw System - instruments

■ Driver



■ Power Driver



■ Reamer



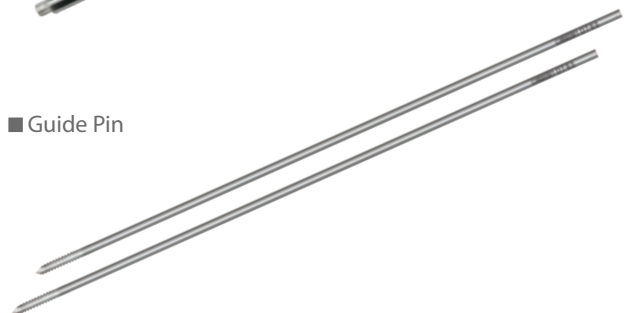
■ Locking Driver



■ Guide



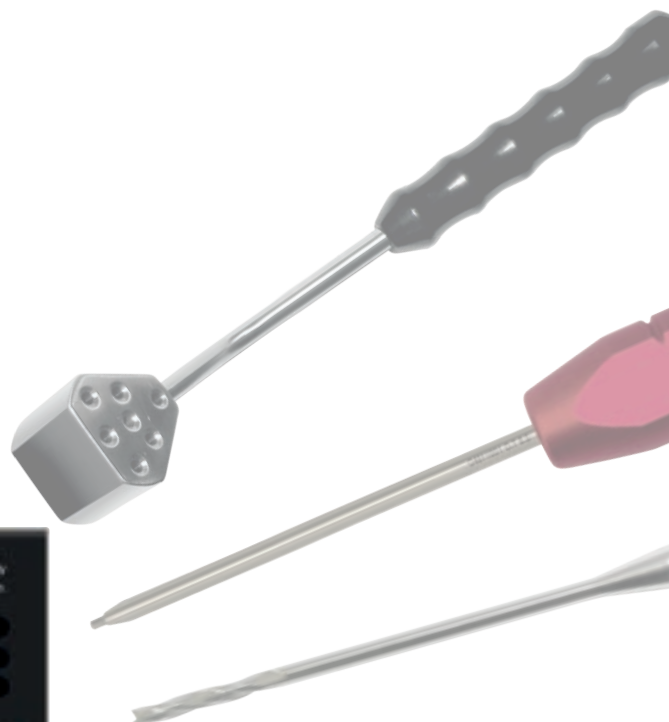
■ Guide Pin



■ Depth Gauge



■ Cannulated Screw Case



ORTHO TECH Co., Ltd.
78 Yuram-ro, Dong-gu, Daegu, 41059, Rep. of Korea
Tel +82-53-314-7016 Fax +82-53-314-7017
e-mail orthotech@orthotech.co.kr
www.orthotech.co.kr



Caution: Law restricts these devices to sale by
or on the order of a physician



See IFU For operating manual.



OTBR-21847E 2022-01-24 Rev.0